



# ESG4 Conference @ UCSB

4<sup>th</sup> IASPEI/IAEE International Symposium:  
Effects of Surface Geology on Strong Ground Motion

**Welcome**





# ESG4 Conference @ UCSB

4<sup>th</sup> IASPEI/IAEE International Symposium:  
Effects of Surface Geology on Strong Ground Motion

## OUR SPONSORS





# ESG4 Conference @ UCSB

4<sup>th</sup> IASPEI/IAEE International Symposium:  
Effects of Surface Geology on Strong Ground Motion

Ralph J. Archuleta  
Conference Chairman  
Department of Earth Science  
University of California, Santa Barbara

Local Planning Committee  
Jamison H. Steidl  
Earth Research Institute  
University of California, Santa Barbara

Sandra W. H. Seale  
Earth Research Institute  
University of California, Santa Barbara

Hiroshi Kawase  
Co-chairman of JWG on ESG+SMP  
Disaster Prevention Research Institute,  
Kyoto University

Jacobo Bielak  
Co-chairman of JWG on ESG+SMP  
Dept. of Civil & Environmental Engineering  
Carnegie Mellon University



**IASPE / IAE**  
**4<sup>TH</sup> GROUND MOTION**  
**2011**  
**UC SANTA BARBARA**



### Conference Facilities

- 1. Corwin Pavilion**
  - Registration, Sessions, Posters
- 2. University Center Harbor Room (Lower Level)**
  - NEES Pre-Conference Workshop
- 3. Manzanita Village Residence Hall**
  - ESG4 On-Campus Accommodation
- 4. Manzanita Village Bus Loop**
  - 8/27 Post Conference Excursions Transportation Loading
- 5. Lagoon Plaza**
  - 8/23 Opening Dinner, 8/24 Catered Lunch
  - 8/26 Afternoon Reception, Posters, Refreshment Breaks
- 6. Goleta Beach**
  - 8/25 Catered BBQ Dinner
- 7. Carrillo Dining Commons**
- 8. De La Guerra Dining Commons**
- 9. Lot 22 Parking**

- Accessible Parking
- Motorcycles
- Bus Stop
- Coastal Access
- Residence Halls
- Traffic Light
- Parking Meters (available to general public)
- Parking Dispensers
- Parking

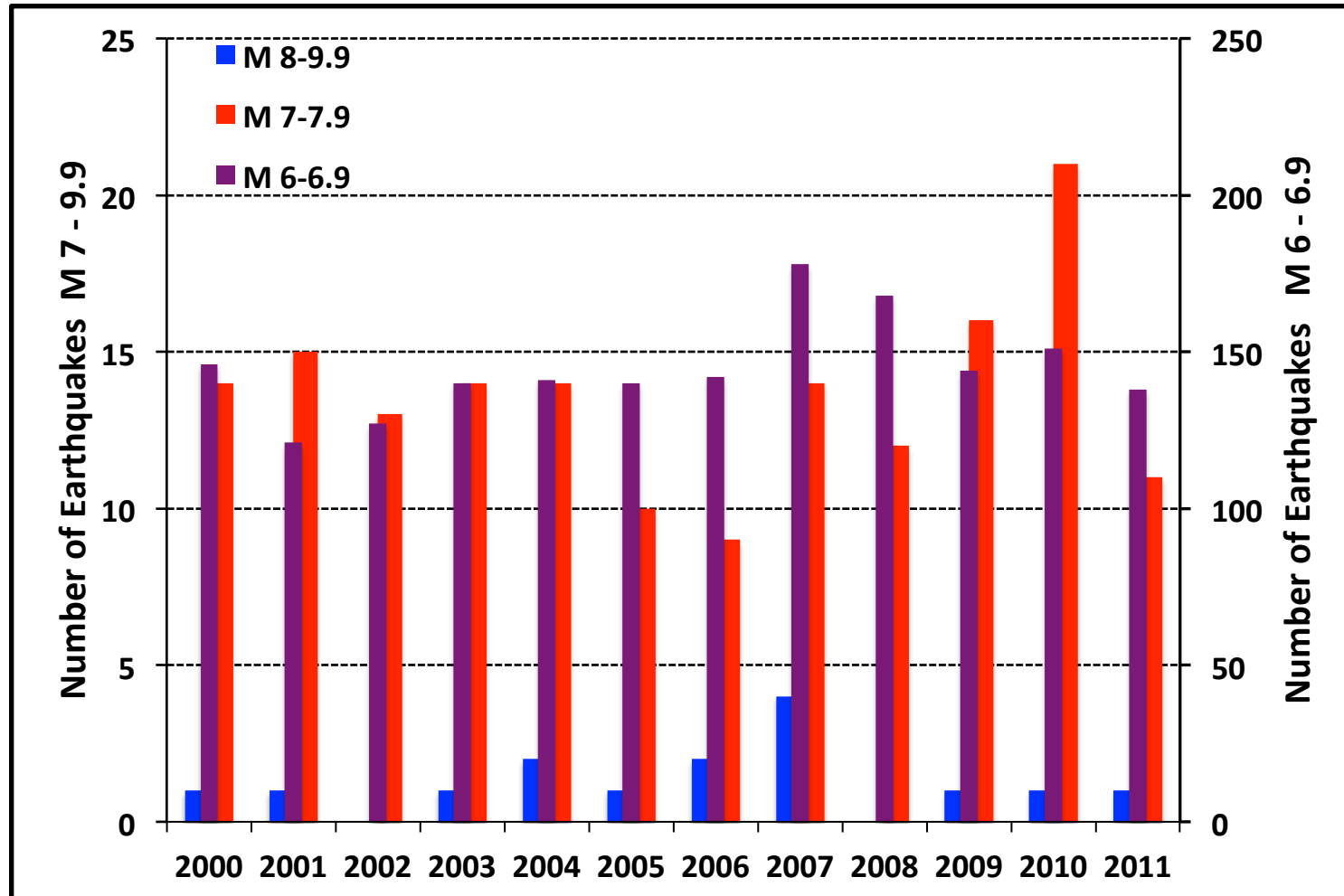
To Goleta Beach  
 (1st exit leaving Henley Gate) **6**

UCSB  
 UNIVERSITY OF CALIFORNIA  
 SANTA BARBARA



# ESG4 Conference @ UCSB

4<sup>th</sup> IASPEI/IAEE International Symposium:  
Effects of Surface Geology on Strong Ground Motion

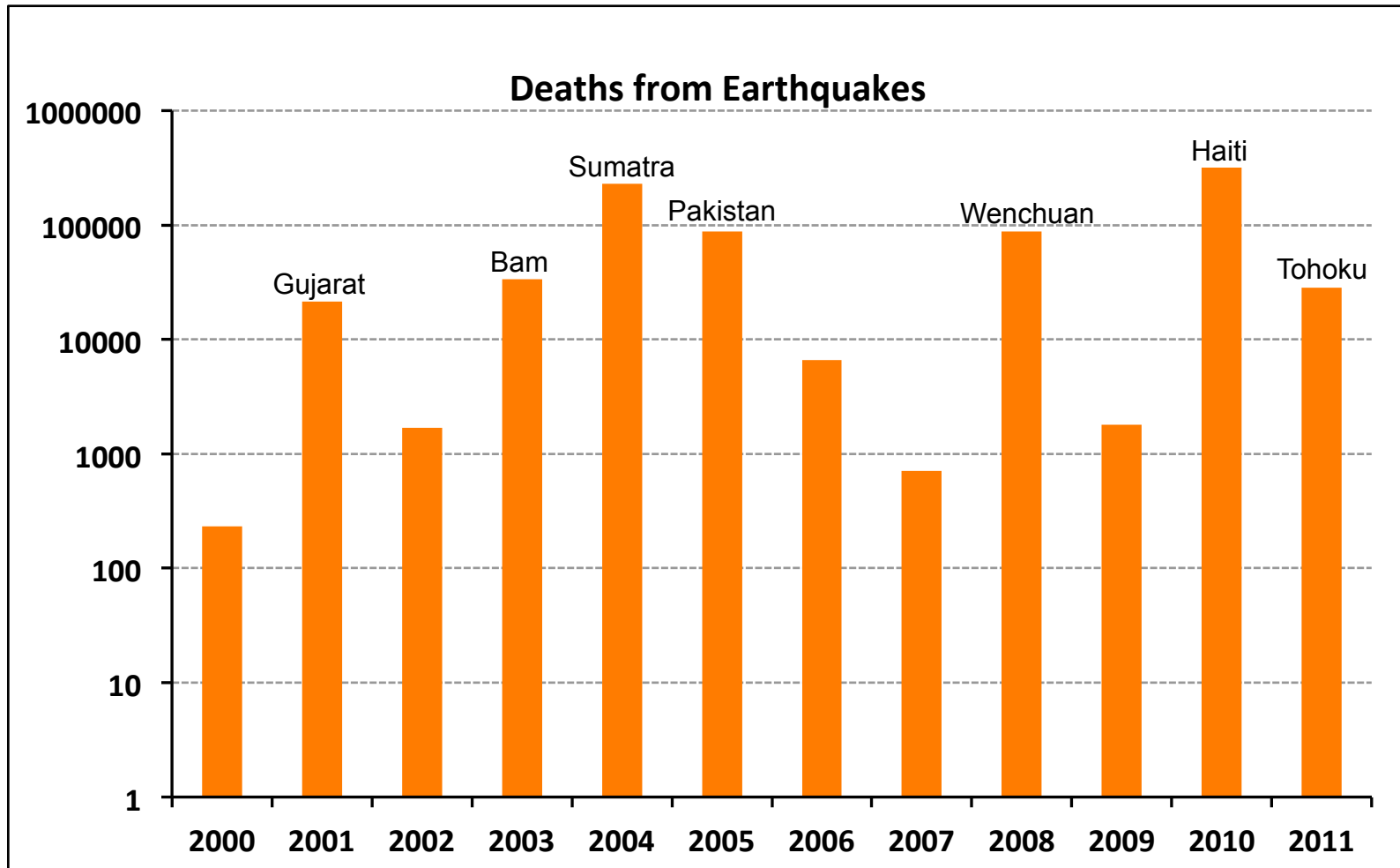


From USGS-National Earthquake Information Center—Aug. 18, 2011



# ESG4 Conference @ UCSB

4<sup>th</sup> IASPEI/IAEE International Symposium:  
Effects of Surface Geology on Strong Ground Motion



From USGS-National Earthquake Information Center—Aug. 18, 2011



# ESG4 Conference @ UCSB

4<sup>th</sup> IASPEI/IAEE International Symposium:  
Effects of Surface Geology on Strong Ground Motion

"An approximate answer to the right problem is worth a good deal more than an exact answer to an approximate problem."

-- John Tukey